



Flight Plan & Site Survey

Created using **RPAS Wilco®**

Operation Name:	Golden Horseshoe Jet rev
Pilot Name:	[REDACTED]
Pilot Certificate:	[REDACTED]
Flight Start:	March 1, 2023 5:52 PM
Flight End:	March 1, 2023 7:52 PM
Flight Area (Latitude):	42° 58' 36.50" N (42.977)
Flight Area (Longitude):	79° 19' 10.90" W (-79.32)
Altitude - Radius:	Alt: 400 ft - Rad: 926.0 m (0.5 nm)
Airspace:	UNCONTROLLED
FIR - Contact:	CZYZ - 905-676-4509
Weather:	1.0 Celsius - Partially cloudy

Please ensure you received all required authorizations prior to flight.

Disclaimer

This Site Survey was created using RPAS Wilco by AIM Robotics. The flight plan contained is intended only for RPAS flights on the date/time and location specified. The user accepts all responsibility for the accuracy and completeness of the information contained.

For the complete Terms & Conditions, see

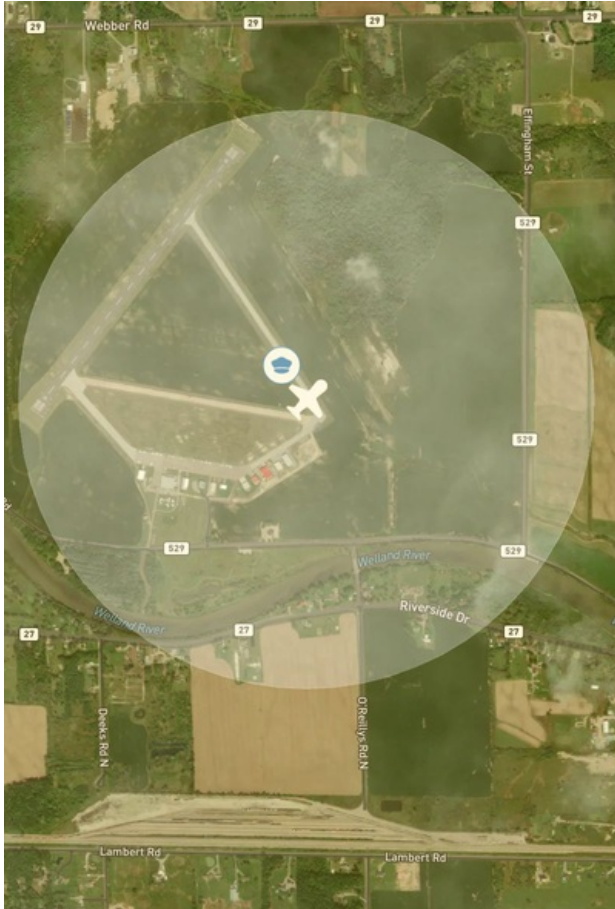
<https://rpaswilco.com/#/tnc>

Included



- Site Survey
- Obstacles (if available)
- Nearby Aerodromes
- Canadian Aviation Regulations
- GFA
- Aerodrome Supplements
 - METAR & TAF (if available)
 - NOTAMs
 - CFS



Flight Map



MAP Details

	Latitude	Longitude
 MODEL	42° 58' 36.50" N (42.977)	79° 19' 10.90" W (-79.32)
 Pilot	42° 58' 40.10" N (42.9778)	79° 19' 14.50" W (-79.3207)

Class	Name	Floor	Ceiling
E	Southern Ontario Low Level Control Area CAE	2500MSL	6500MSL
E	Windsor, ON TA	700AGL	12500MSL
B	Windsor, ON TA	12500MSL	18000MSL
E	T608 Airway	2200AGL	12500MSL
B	T608 Airway	12500MSL	18000MSL
E	Southern Ontario Low Level Control Area CAE	6500MSL	12500MSL
B	Southern Ontario Low Level Control Area CAE	12500MSL	18000MSL
E	Toronto XPNDR MANDTRY	6500MSL	12500MSL

NIAGARA CENTRAL DOROTHY RUNGELING (CNQ3 AERODROME Reg)	Lat: 42.98	Long: 79.324	0.499 KM	0.27 NM
WELLAND (COUNTY GEN HOSPITAL) (CPB3 HELIPORT Cert)	Lat: 42.977	Long: 79.25	5.67 KM	3.06 NM
PORT COLBORNE (CPE5 AERODROME Reg)	Lat: 42.877	Long: 79.353	11.424 KM	6.17 NM
NIAGARA SOUTH (CNF9 AERODROME Reg)	Lat: 42.999	Long: 79.063	21.025 KM	11.35 NM

Condition	Temperature	Feels Like	Precipitation	Visibility	Cloud Coverage	Wind Speed	Humidity
Partially cloudy	1.0 Celsius	2.0 Celsius	5.0 %	14.8 Km	47.4 %	20.7 kph	81.9 %

Canadian Aviation Regulations

Division III — General Operating and Flight Rules

For full listing please visit <https://laws-lois.justice.gc.ca/eng/regulations/SOR-96-433/FullText.html#s-901.27>

Visual Line-of-sight

- **901.11 (1)** Subject to subsection (2) no pilot shall operate a remotely piloted aircraft system unless the pilot or a visual observer has the aircraft in visual line-of-sight at all times during flight.
- **(2)** A pilot may operate a remotely piloted aircraft system without the pilot or a visual observer having the aircraft in visual line-of-sight if the operation is conducted in accordance with a special flight operations certificate — RPAS issued under section 903.03.

Procedures

- **901.23 (1)** No pilot shall operate a remotely piloted aircraft system unless the following procedures are established:
 - **(a)** normal operating procedures, including pre-flight, take-off, launch, approach, landing and recovery procedures; and
 - **(b)** emergency procedures, including with respect to
 - **(i)** a control station failure,
 - **(ii)** an equipment failure,
 - **(iii)** a failure of the remotely piloted aircraft,
 - **(iv)** a loss of the command and control link,
 - **(v)** a fly-away, and
 - **(vi)** flight termination.
- **(2)** If the manufacturer of the remotely piloted aircraft system provides instructions with respect to the topics referred to in paragraphs (1)(a) and (b), the procedures established under subsection (1) shall reflect those instructions.
- **(3)** No pilot shall conduct the take-off or launch of a remotely piloted aircraft unless the procedures referred to in subsection (1) are reviewed before the flight by, and are immediately available to, each crew member.
- **(4)** No pilot shall operate a remotely piloted aircraft system unless the operation is conducted in accordance with the procedures referred to in subsection (1).

Site Survey

901.27 No pilot shall operate a remotely piloted aircraft system unless, before commencing operations, they determine that the site for take-off, launch, landing or recovery is suitable for the proposed operation by conducting a site survey that takes into account the following factors:

- **(a)** the boundaries of the area of operation;
- **(b)** the type of airspace and the applicable regulatory requirements;
- **(c)** the altitudes and routes to be used on the approach to and departure from the area of operation;
- **(d)** the proximity of manned aircraft operations;
- **(e)** the proximity of aerodromes, airports and heliports;
- **(f)** the location and height of obstacles, including wires, masts, buildings, cell phone towers and wind turbines;
- **(g)** the predominant weather and environmental conditions for the area of operation; and
- **(h)** the horizontal distances from persons not involved in the operation.

Operations at or in the Vicinity of an Aerodrome, Airport or Heliport

- **901.47 (1)** No pilot shall operate a remotely piloted aircraft at or near an aerodrome that is listed in the *Canada Flight Supplement* or the *Water Aerodrome Supplement* in a manner that could interfere with an aircraft operating in the established traffic pattern.
- **(2)** Subject to section 901.73 no pilot shall operate a remotely piloted aircraft at a distance of less than
 - **(a)** three nautical miles from the centre of an airport; and
 - **(b)** one nautical mile from the centre of a heliport.
- **(3)** No pilot shall operate a remotely piloted aircraft at a distance of less than three nautical miles from the centre of an aerodrome operated under the authority of the Minister of National Defence unless the operation is conducted in accordance with a special flight operations certificate — RPAS issued under section 903.03.

Records

- **901.48 (1)** Every owner of a remotely piloted aircraft system shall keep the following records:
 - **(a)** a record containing the names of the pilots and other crew members who are involved in each flight and, in respect of the system, the time of each flight or series of flights and
 - **(b)** a record containing the particulars of any mandatory action and any other maintenance action, modification or repair performed on the system, including
 - **(i)** the names of the persons who performed them,
 - **(ii)** the dates they were undertaken,
 - **(iii)** in the case of a modification, the manufacturer, model and a description of the part or equipment installed to modify the system, and
 - **(iv)** if applicable any instructions provided to complete the work.
- **(2)** Every owner of a remotely piloted aircraft system shall ensure that the records referred to in subsection (1) are made available to the Minister on request and are retained for a period of
 - **(a)** in the case of the records referred to in paragraph (1)(a), 12 months after the day on which they are created; and
 - **(b)** in the case of the records referred to in paragraph (1)(b), 24 months after the day on which they are created.
- **(3)** Every owner of a remotely piloted aircraft system who transfers ownership of the system to another person shall, at the time of transfer, also deliver to that person all of the records referred to in paragraph (1)(b).

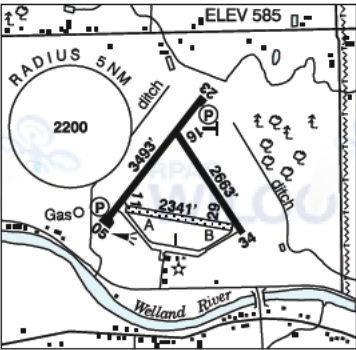
ONTARIO

AERODROME/FACILITY DIRECTORY

WELLAND / NIAGARA CENTRAL DOROTHY RUNGELING ON

CNQ3

REF	N42 58 48 W79 19 29 3.5W 10°W (2014) UTC-5(4) Elev 585' A5000 LO6 CAP
OPR	Niagara Central Airport Commission 905-714-1000 Reg
PF	B-6 C-2,3,4,5
CUST	AOE/CAN
FLT PLN	
FIC	London 866-WXBRIEF (Toll free within Canada) or 866-541-4104 (Toll free within Canada & USA)
SERVICES	
FUEL	100LL Self-serve H24 Visa, MasterCard & debit cards
OIL	All
S	2,3,4,5
RWY DATA	Rwy 05(048°)/23(228°) 3493x100 ASPH Rwy 16(156°)/34(336°) 2663x50 ASPH Rwy 11(110°)/29(290°) 2341x60 GRASS Opr 14-22Z† Rwy 11/29 no win maint.
RCR	
LIGHTING	05-(TE ME) AP, 23-(TE ME) AP ARCAL-123.5 type K
COMM	
ATF	UNICOM ltd hrs O/T t/c 123.5 5NM 3600 ASL
PRO	Rgt hand circuits Rwy 23, 29, and 34 (CAR 602.96). Parachute activity, do not over- fly A/D; join circuit on downwind leg.
CAUTION	Parajumps at A/D and within 2NM to 12500 ASL Mar-Dec. Glider ac ivity Sat, Sun and hols Apr-Jun and Sep-Nov. Gliders may follow non-standard circuit. Canada Geese activity.



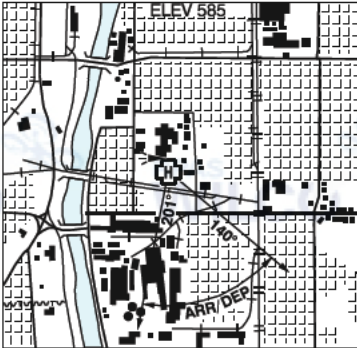
ONTARIO

AERODROME/FACILITY DIRECTORY

WELLAND (COUNTY GEN HOSP) ON (Heli)

CPB3

REF	N42 58 39 W79 14 59 Adj S 10°W UTC-5(4) Elev 585' A5000
OPR	Welland County Gen Hosp 905-732-6111 Cert PPR
FLT PLN	FIC London 866-WXBRIEF (Toll free within Canada) or 866-541-4104 (Toll free within Canada & USA)
HELI DATA	86' dia (40' ASPH, 46' GRASS) 114' dia Rstd max heli length 57.5' RCR Opr
LIGHTING	RY(LO) RF(FL)
PRO	Arr/dep btwn 140°-201° fr heli, slope 8% (H3), day/night use.



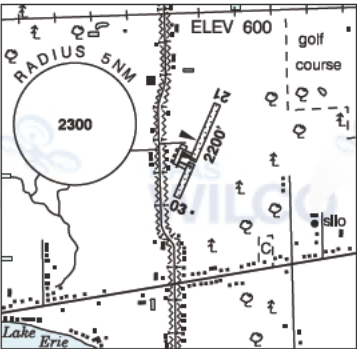
ONTARIO

AERODROME/FACILITY DIRECTORY

PORT COLBORNE ON

CPE5

REF	N42 52 39 W79 21 10 4.8W 10°W UTC-5(4) Elev 600' A5000
OPR	Skydive Burnaby 905-899-1528 Reg PPR
PF	B-1 C-2,3,4,5,6
FLT PLN	FIC London 866-WXBRIEF (Toll free within Canada) or 866-541-4104 (Toll free within Canada & USA)
SERVICES	
FUEL	100LL
OIL	All
S	1,4,5
RWY DATA	Rwy 03/21 2200x75 GRASS Thld 03 displ 800'.
RCR	Opr No win maint. Rwy soft when wet.
COMM	
ATF	tfc 123.2 5NM 3600 ASL
A/G	122.9
PRO	Rgt hand circuits Rwy 21 (CAR 602.96). Possible tfc conflict from A/D 2NM E. OcsI release of parachutes Mon-Fri fr 500' above water aprx 1NM S, announced on ATF. CYA513(P) activated by NOTAM when parachuting in progress btwn 2800-14,500 ASL.

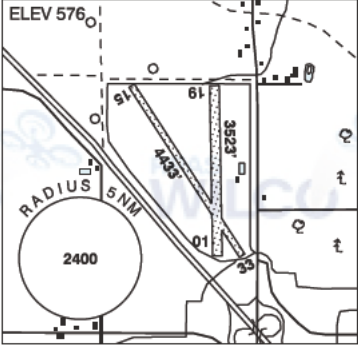


ONTARIO

AERODROME/FACILITY DIRECTORY

NIAGARA FALLS / NIAGARA SOUTH ON

CNF9

REF	N42 59 58 W79 03 48 11°W UTC-5(4) Elev 576' A5000	
OPR	Russell Aviation Group 905-295-2777 905-295-7324 Reg PPR	
PF	C-1,2,3,4,5,6	
FLT PLN	FIC London 866-WXBRIEF (Toll free within Canada) or 866-541-4104 (Toll free within Canada & USA)	
SERVICES	S 7	
RWY DATA	Rwy 15(151°)/33(331°) 4433x60 GRVL Rwy 01(010°)/19(190°) 3523x200 GRASS	
RCR	Opr A/D clsd in win. Rwy 01/19 soft when wet.	
COMM	ATF tfc 123.2 5NM 3600 ASL excluding Niagara Falls area pattern (in vicinity of CYR518) and Niagara Falls Int'l CZ	
PRO	For flts over falls see Niagara Falls VTPC.	
CAUTION	Extv tfc in the vicinity of CYR518. Possible aerobatic activity over A/D below 3600 ASL.	